

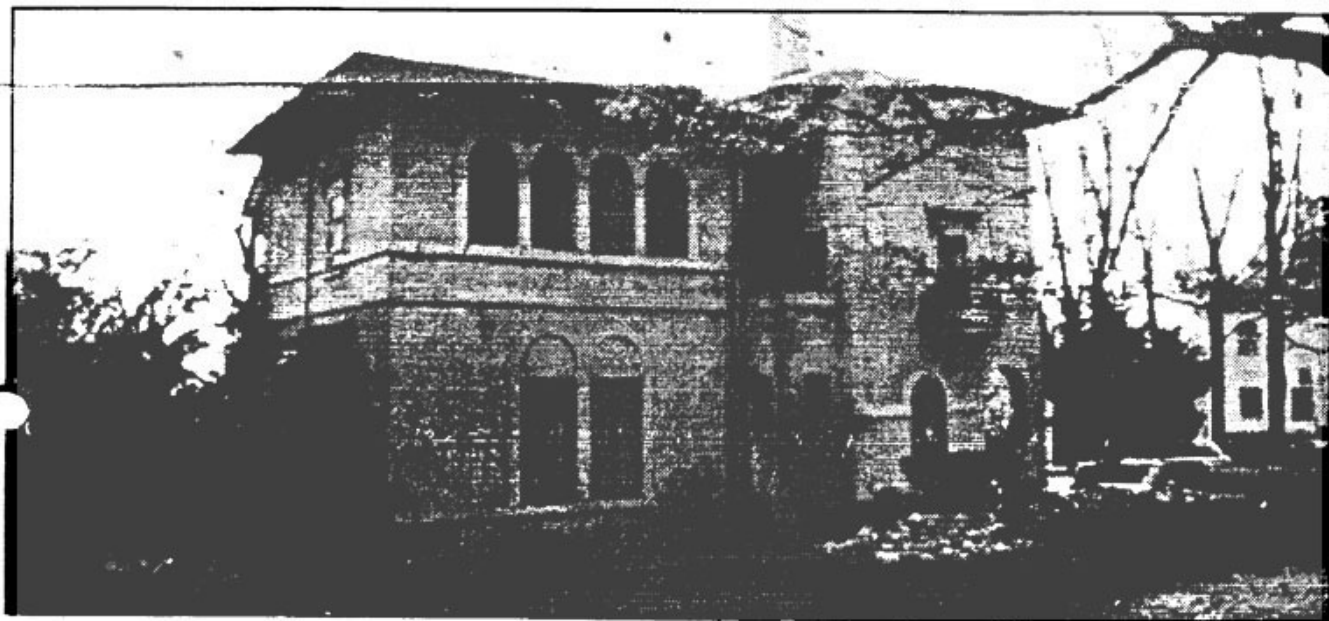
Teel Auctions presents:

1993

Antiques & Real Estate Auction

**Sculptures, Bronzes, Furniture, Art, Collectibles
8-bedroom Montclair Mansion**

Sat., Feb. 20 10 a.m. & Sun., Feb. 21 12 noon (real estate Sat., noon)
105 Upper Mountain Ave., Montclair, N.J.



Welcome!

Teel Auctions is pleased to welcome you to an on-site real estate auction, set for 12 noon, Sat., Feb. 20, 1993 of a beautiful mansion at 105 Upper Mountain Way, Upper Montclair, N.J. You will have the unique opportunity to bid on a beautiful home in one of the most prestigious areas of New Jersey. We believe this auction sale will enable you to purchase a unique property at a price you determine to be fair and reasonable.

Why is this property being auctioned?

The owners have made a considered business decision. They have chosen the Auction form — also known as accelerated marketing — as an alternative to conventional selling via listing and individual offerings. The owners are motivated sellers who are willing to consider all fair and reasonable bids arrived at through auction. The owners retain the right to decide whether to sell if bidding

does not reach acceptable levels.

How do I bid?

You may bid by raising your bid card, raising your hand prominently in the auctioneer or bid assistant's view, or having a bid assistant signal your offer. Feel free to scratch your nose, we won't assume you're bidding, but please be forthright in presenting your bids.

At what price will this property sell?

There's no way of knowing in advance the actual auction price. However, the auction forum provides a true market appraisal where you, the buyer, determine fair market value.

Can I present offers in advance of the auction?

Yes, but the auction will continue as scheduled. If you wish to make an early offer on this property, we will consider that offer a "pre-auction bid." That means bidding will open at that price and others are free to make a higher offer. It's up to the auctioneer and

the seller whether they will accept a bona fide pre-auction bid. The advantage: you can demonstrate to other potential bidders that you are serious about acquiring the property at a realistic price.

What happens if, after the auction, this property becomes available?

All successful bidders are required to have sufficient downpayment, but there is no guarantee that all will secure financing. In that event, we will contact back-up bidders to determine if they are still interested in a property. We understand that many people have never been to a real estate auction. Robert Teel, the auctioneer, will speak clearly so as to be easily understood. If you can't hear or are not certain of the current bid price, don't hesitate to speak up and ask. The property will be shown by appointment to any interested parties.

Terms and Conditions of Sale

All bidding is open to the public. All bids will

Real estate highlights:

- 14 rooms, 8 bedrooms, 4.5 bath
- Stucco exterior
- Lot size: .912 acre
- Taxes: \$16,870 (1991)
- First floor: foyer, living room, dining room, library, breakfast room, kitchen, solarium, mud room, powder room
- Second floor: master bedroom w/ bath, 6 bedrooms plus bath
- Third floor: bedroom & bath
- Basement: partially furnished w/ laundry room
- Ground sloped & beautifully landscaped
- Located in "magnet school" system
- Florentine villa design built by famous American artist
- Listed in national historic registry
- Original works of art affixed to house
- Dramatic fireplace; Wall to wall carpeting
- Perfect for gracious entertaining
- Flat roof stripped & replaced in 1992. Tile roof; Circular driveway
- Inc. washer, dryer, compactor, microwave, bbq in., dishwasher
- Electric/Oil steam heat, city water & sewer, public gas
- Burglar alarm & smoke detectors
- View of Manhattan skyline
- Note: seller is licensed Realtor. Broker of Record: Schlott/Coldwell Banker
- Also: 1-acre lot at 178 Upper Mtn. Ave. sold after home. Call for brochure.

begin at the price determined by the auctioneer and will advance in increments determined by the auctioneer. Title to all units will be scheduled to close in 90 days from Auction Day unless otherwise stated in writing at the time of sale. Good deeds are guaranteed. Any disputes among bidders will be resolved by the auctioneer who will have sole authority to accept, reject, re-offer or resell the property. Potential buyers can contact Teel Auctions to obtain copies of the agreement of sale for review by their attorney in advance of sale. There is no buyer's premium.

Acknowledgement

Upon acknowledgement by the auctioneer of the winning bid, the successful bidder will be required to immediately sign a sales agreement form. This form verifies the amount of the bid and sets the time limits and form of closing.

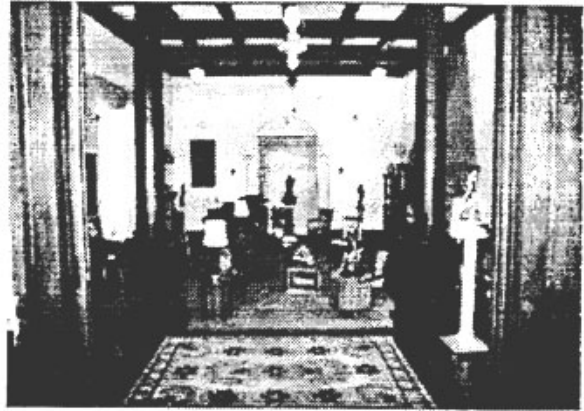
Immediately upon bid acceptance and the signing of a sales agreement, the successful bidder will be required to present \$25,000 in the form of cash, certified check or bank confirmation letter verifying that funds will be wired the next business day as downpayment. This downpayment is non-refundable. Buyer's have 90 days from date of auction to close. Deposits are non-refundable. Please confirm financing in advance.

Offering Conditions

This property is sold in an "As is where is" condition without any warranties, either expressed or implied. All property dimensions are approximate. Bidders must rely on their

own or their experts' inspection or judgment with respect to the condition of the offering and the accuracy of any information presented pertaining to the offering.

Potential bidders may arrange to have a professional inspection of any property in advance of the Auction Day. All announcements made from the podium will take precedence over all other oral, printed



or advertised materials. Good luck, and thank you for your interest.

Broker Participation

A commission of 2 percent of the purchase price will be paid to the licensed real estate broker licensed whose registered client closes title to the property. The real estate salesperson must register the prospective buyer by mail on company stationary, prior to any property inspection by the buyer. Registrations must be signed by the prospective buyer, the salesperson and the broker. On the initial visit, the salesperson must register and inspect the property with the prospective buyer. The salesperson must attend the auction with the prospective buyer, remain present through the auction and sign the purchase agreement as the buyer's representative.

Contents sold separately.



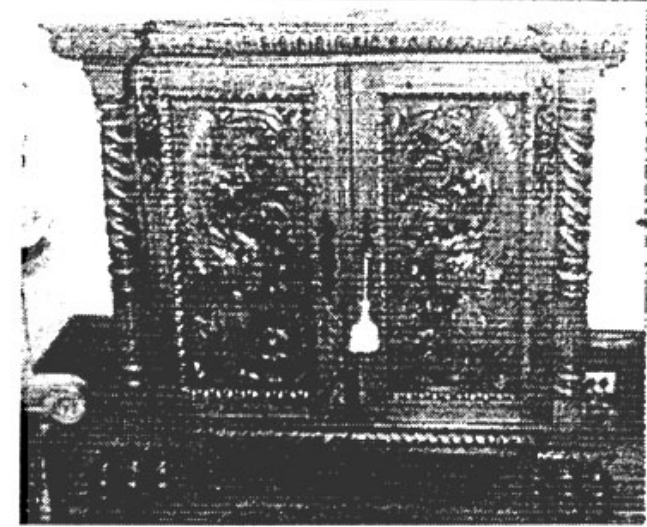
Teel Auctions

Robert C. Teel, Auctioneer
Terry Teel, Vice President
P.O. Box 128, Rt. 611
Mt. Bethel, Pa. 18343
(717) 897-TEEL
Fax: (717) 897-0215

Content Highlights: 14K gold pocket/pendant watch, with 14K hand engraved hunting case, American Waltham Watch Co.: 14K Y/G solid 24" rope chain with safety clasp: Large Bronze Sculpture of Mother and Child, by Juan Gleutherin, 1880, good patina: Large Art Nouveau Doree Bronze Sculpture, semi-nude Woman with two Cherubs, sculpture E. Drauot: Large Bronze Horse with mounted figure of a Circus Clown, horse and rider sculptured in great detail, good patina, sculpture Colom od: Large Bronze Horse with mounted figure of a Woman, horse and woman sculptured in great detail, good patina, sculpture Colom, od: Bronze sculpture, good patina, titled Blind Girl of Paris, sculpture Lerouze: Large Bronze Doree Sculpture of a Lady on a Horse, lady in costume of mid 19th century, very decorative dress with crown on hat, horse with very ornamental bridle and blanket, on large serpentine marble base, signed E. Fremiet, good patina: Rdolstadt Porcelain, art nouveau, of Nude Woman holding a Ball: Large Porcelain Sculpture, signed Guce Helena, Meissen, highly decorative dress and robe in shades of red and green with border of gold, woman holding crown in hand with jeweled crown on head: Large Porcelain Statue, KPM, model of Ethel Barrymore on chaise lounge, clothing and hairdo of the 1920's, beautifully executed: Very large Cloisonne Vase, Chinese: Large Bronze of semi-nude Woman, draped in Grecian style, over wreaths & stars, unsigned good patina: Large Bronze Sculpture of Fencing Master holding foil, signed "Aranhkassant" Sculptor E. Noyer:



Very Large Oval Shield, in copper with silver gilt, border of 12 astrological sculptures, center covered with Greek mythological scenes, signed Morel Laverie Fedit 1866: Bronze base relief, subject: Isabella of Castile & Ferdinand of Aracon, Sculptor G. Federici: Painting, portrait of a Woman on wood panel, antique gold gilt frame: Porcelain Plaque, Madame Lebraun wearing hat, in gold leaf frame, painted in tones of blue and flesh: Miniature Porcelain Plaque, hand painted, of Napoleon, in small bronze filigree frame: Miniature Porcelain Plaque, hand painted, Cleopatra, in bronze double tow, jeweled frame: Porcelain vase of black basalt of Orpheus playing flute with small cherub, rococo sculptured background, titled - Chorion: Art Glass Vase, blue Aurene background with bits of end of day glass & threading: Large Art glass Vase in satin & end of the day glass, elongated single gourd shape, in tones of blue: Large Schneider Art Glass Bud Vase, in red and brown: Large Schneider glass compote in shades of pink and brown with bronze base: Bud Vase, art glass, blue and gold, signed Steuben Aurene: Compote, art glass, signed Steuben Aurene,



gold color with pastel colored stem and vase: Ornamental Royal Crown Darby Porcelain two handled Vase: Royal Vienna Porcelain Vase with finial in shape of crown: Bronze and marble inkwell of sculptured flowers and leaves. set on marble with finely sculptured horse head: Painting on silk, Emperor and Empress seated on throne chairs: Pair of Mary Gregory Vases, mounted on bronze bases with scroll & leaf feet: Large Lithograph of a Ballerina by J. Icard: Bronze Sculpture of Horse, good patina: Carved





scene: Continental bronze pedestal with Sang De Bouf marble base and top: Bronze figurine of young boy by M. Puinlich: Tall bronze bust of Dante mounted on pair of books: Bronze figure of a reclining Putti: Sernes Porcelain mounted bronze clock crowned with urn and matching face: Renaissance revival mirror in walnut and ebony wood frame crowned with

Wood sculpture in form a Winged Cherub, painted in vivi colors with gesso showing in places: Painting of pre-Florentine Gentlemen in gold-leaf frame: Bronze Sculpture of Nude Woman signed E. Godeau, Paris: Doree Bronze Sculpture of Nude Woman large marble base: Doree Bronze Sculpture of Nude Woman with serpent on base - Beguine (Paris): Copy of Portrait of Cosimo Di Medici by Bronzini in original frame: Pair of Equine Figures with male figure holding harness case in bronze 19th century copy of the 18th century model by Coustou (Guillaume) - French. "Marly Horse": Oval shaped table, table of Boulle with extensive and elaborate metal inlay: English Lustreware Jardiniere with handles, slip decorated with warrior

two carved Putti: Gaetano Federici Dante plaque in bronze: (2) 6-foot plaster life-size figures of Venus by Federici: 4-foot chalk bust of Federici's Columbus, original cast in bronze: 4-foot chalk bust of Pulaski, original cast in bronze with original sculptor's turntables: 2 pcs. early Edison test equipment: 54-inch round oak pedestal table with claw feet & 2 leaves: 2 countersize Sharpfax 729 copiers: lots of prints & engravings: over 200 carvings of bust, plaques, wall mounts, original molds from many of Federici's works: hundreds of antique bottles, bottle collection: easels, work benches: carving platforms: many Federici's carving tools: 2-style Victorian recamier sofa: art glass.



Schedule of conents:
Sat., Antiques, art & collectibles
Sun., Workshop and works of
renowned Gaetano Federici Sr.,
plus other general antiques &
collectibles.

